



UNIC

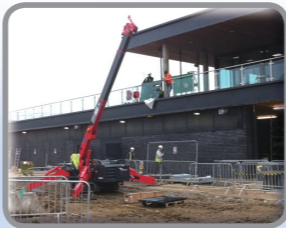
UNIC MINI-CRAWLER CRANE
AT WORLDWIDE JOBSITES

UR-W094C UR-W295C UR-W376C UR-W546C UR-W547C UR-W706C UR-W1006C

UNIC mini-crawler crane

is incredibly compact and useful lifting equipment. Its excellent accessibility and flexibility have been globally accepted.

UNIC mini-crawler crane is perfect lifting equipment that enables to meet wide variety of applications, and ideal tools to support lifting works wherever access is restricted or working space is confined. Its excellent accessibility and flexibility will make many labor-intensive lifting operations be easier, safer and faster.



UNIC MINI-CRAWLER CRANE

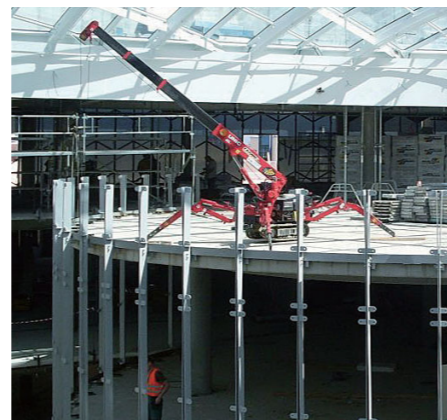


High elevation or Top of building

UR-W706C



UR-W706C



UR-W094C



Inside Factory

UR-W295C



UR-W295C



UR-W546C



UR-W706C



UR-W706C



UR-W295C



UR-W706C



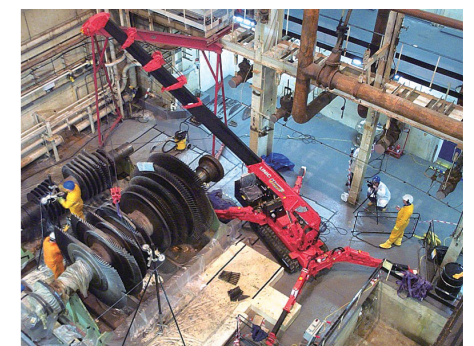
UR-W295C



UR-W295C



UR-W094C



UR-W376C



UR-W295C



UR-W295C



UR-W706C



UR-W295C



UR-W376C



Events, museum

UR-W295C



UR-W376C



UR-W546C



UR-W295C



UR-W295C



UR-W546C



UR-W295C



UR-W295C



UR-W295C



UR-W546C



UR-W295C



Glazing with vacuum lifter

UR-W295C



UR-W295C

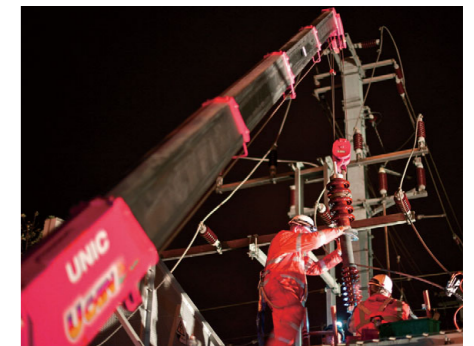


Rail & Air industries

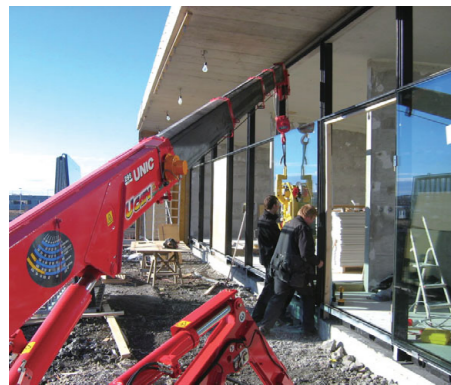
UR-W706C



UR-W706C



UR-W295C



UR-W295C



UR-W295C



UR-W706C



UR-W376C



UR-W376C



UR-W295C



Other job sites

UR-W1006C



UR-W546C



UR-W706C



UR-W295C



UR-W295C



UR-W295C



UR-W706C



UR-W546C



UR-W546C



UR-W295C



UR-W547C



UR-W295C



Maneuverability for Transportation
through narrow path and inlet

UR-W546C



UR-W706C



UR-W295C



Maneuverability for Transportation
Disassemble, Transport, Reassemble, Crane Operation



UR-W706C



UR-W706C



UR-W295C



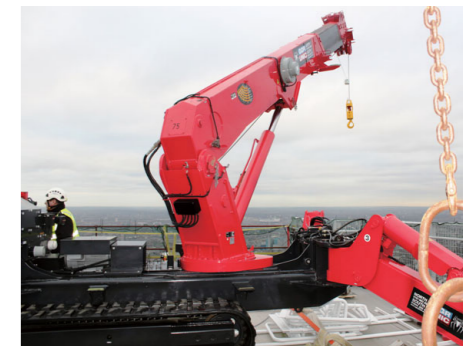
UR-W706C



UR-W547C



UR-W706C



UR-W706C



UR-W706C



UR-W295C



UR-W094C



UR-W094C



UR-W094C



Attachments

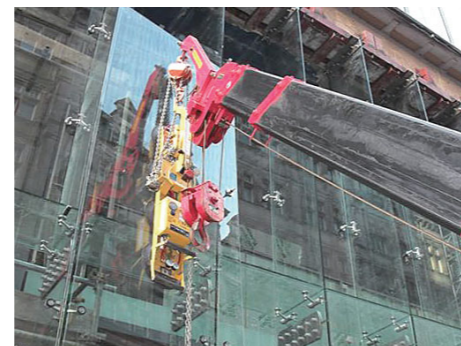
UR-W295C



UR-W094C



UR-W295C



UR-W295C



UR-W295C



UR-W295C

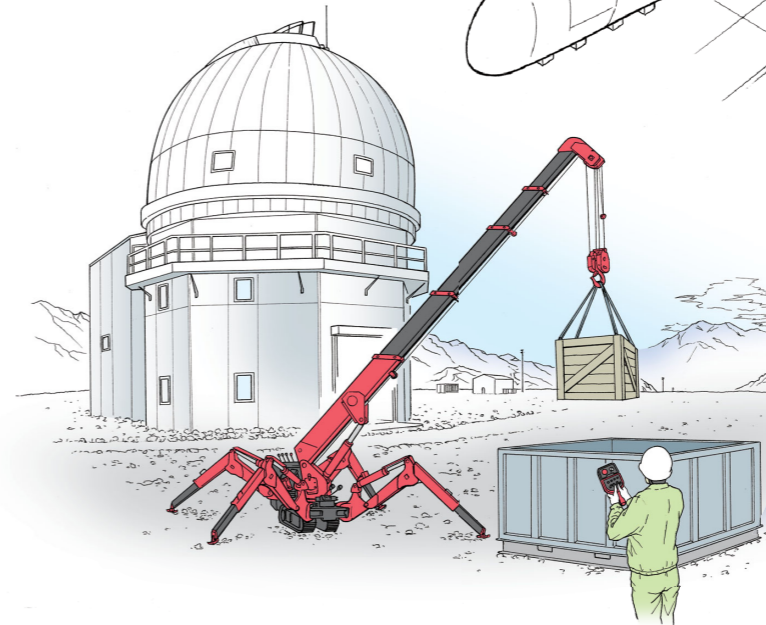
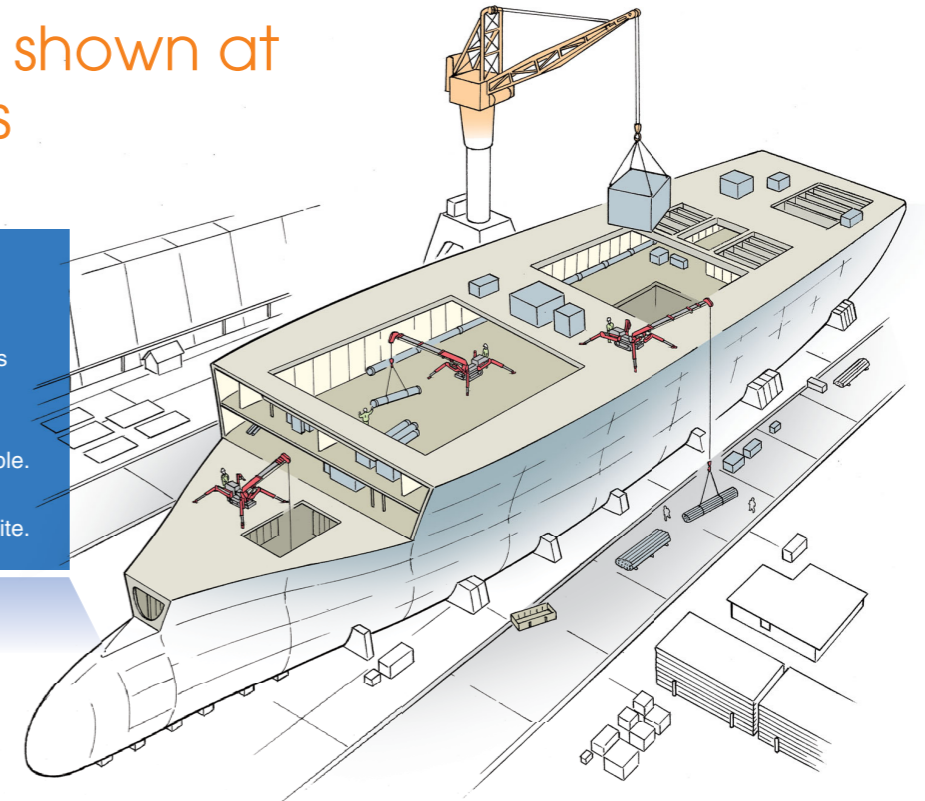


UR-W295C

Its abilities are shown at limited spaces

At ship yard

Suitable for placing the equipments or lifting operation through narrow inlet deep inside the vessel where access of tower crane is not possible. Excellent maneuverability enables traveling around the confined job site.

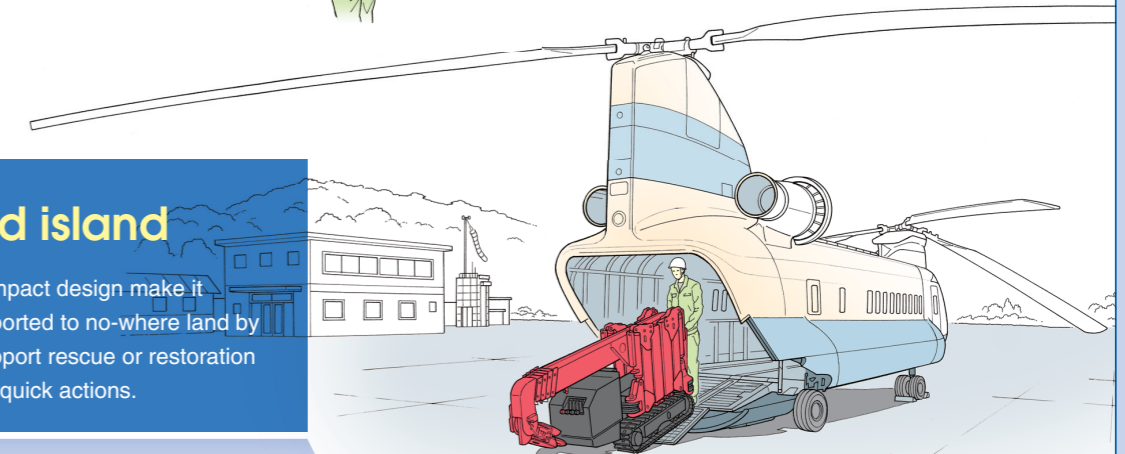


At observation station

Traveling gears by crawler enable safe access through rough terrain in the remote area. Wide selection of power sources, Petrol, Diesel or Electric, ensures crane operation anywhere.

To isolated island

Light weight and compact design make it possible to be transported to no-where land by helicopter. It can support rescue or restoration job that require very quick actions.





UNIC

FURUKAWA UNIC CORPORATION

5-3, Nihonbashi 1-chome, Chuo-ku, TOKYO 103-0027 JAPAN

<http://www.uniccrane-global.com/>

Phone: **(81-3) 3231-8613** / Facsimile: **(81-3) 3231-8261**

Authorized **UNIC** distributor